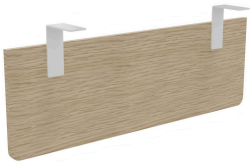


Environmental and social impact diagnostic by Eco Impact



Brand : **Buronomic** | End of validity : **20/02/2027**
Model : **MELA SUSPENDED MODESTY PANEL L90 x H35 / DESK L120**
SKU : **AR00** | Category : **Other** | Gross weight : **3.75 kg**
Dimensions : **90x1.6x30 cm**

Life cycle assessment



Assessment Framework

Base IMPACTS, established by ADEME
BP X 30-323-0
Furnishings (BP X 30-323-4) revised in 2023

Find our assessment methodology on eco-impact.io

api.eco-impact.io/manufacturers/64a6c376d094006224c475c9/products/66572389ae1d3548e1272dcd/overview/lca?lang=en_EN

Impacts indicators



Climate change

5 kg eq. CO2 or 24 km by plane



Fossil resource use

71 MJ or 1 heating days for a one-room apartment



Air acidification

25 millimoles eq. H+ or 16 kg of cardboard

Materials

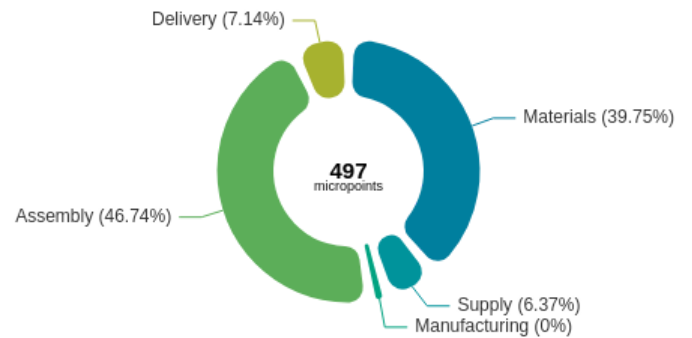
20%

Metal

80%

PEFC particles panel

Environmental cost



Transport



Delivery distance of **401 km**



Flat-packed delivery

Lifespan



Extra legal guarantee: **10 years**



Spare Parts available



Product **Repairable and Fully separable**

Certifications



Environmental quality and features

35% of recycled materials



Totally recyclable



None dangerous substance