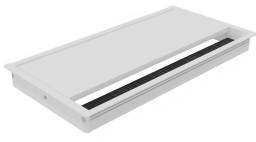


Environmental and social impact diagnostic by Eco Impact



Brand : **Buronomic** | End of validity : **20/02/2027**
Model : **SINGLE TOP ACCESS L24 x D12 + LOCKING**
SKU : **DP07** | Category : **Other** | Gross weight : **0.4 kg**
Dimensions : **24x12x2.5 cm**

Life cycle assessment



Assessment Framework

Base IMPACTS, established by ADEME
BP X 30-323-0
Furnishings (BP X 30-323-4) revised in 2023

Find our assessment methodology on eco-impact.io

api.eco-impact.io/manufacturers/64a6c376d094006224c475c9/products/66572396ae1d3548e127326d/overview/lca?lang=en_EN

Impacts indicators



Climate change

1 kg eq. CO₂ or 4 km by plane



Fossil resource use

3 MJ or 0 heating days for a one-room apartment



Air acidification

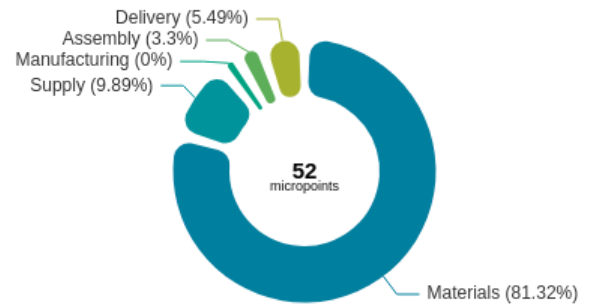
4 millimoles eq. H⁺ or 3 kg of cardboard

Materials

100%

Metal

Environmental cost



Transport



Delivery distance of **401 km**



Flat-packed delivery

Lifespan



Extra legal guarantee: **10 years**



Spare Parts available



Product **Repairable and Fully separable**

Environmental quality and features



Totally recyclable



None dangerous substance

Certifications

