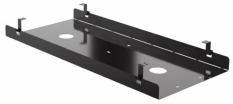


# Environmental and social impact diagnostic by Eco Impact



Brand : **Buronomic** | End of validity : **20/02/2027**  
Model : **DOUBLE METAL CABLE TRAY L75 / DESK L120**  
SKU : **DZ13** | Category : **Other** | Gross weight : **3.5 kg**  
Dimensions : **75x33.5x9 cm**

## Life cycle assessment



### Assessment Framework

Base IMPACTS, established by ADEME  
BP X 30-323-0  
Furnishings (BP X 30-323-4) revised in 2023

Find our assessment methodology on [eco-impact.io](https://eco-impact.io)

[api.eco-impact.io/manufacturers/64a6c376d094006224c475c9/products/665723a7ae1d3548e12739c5/overview/lca?lang=en\\_EN](https://api.eco-impact.io/manufacturers/64a6c376d094006224c475c9/products/665723a7ae1d3548e12739c5/overview/lca?lang=en_EN)

## Impacts indicators



### Climate change

8 kg eq. CO<sub>2</sub> or 36 km by plane



### Fossil resource use

75 MJ or 1 heating days for a one-room apartment



### Air acidification

38 millimoles eq. H<sup>+</sup> or 24 kg of cardboard

## Materials

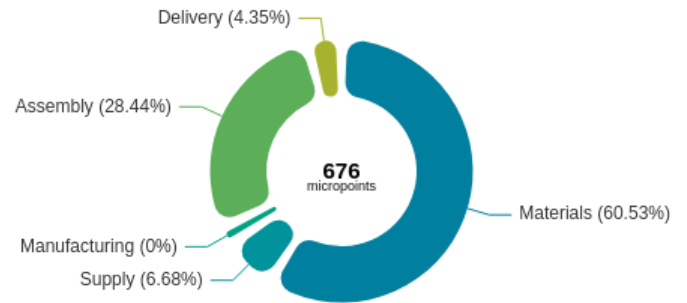
98%

Metal

2%

Plastic

## Environmental cost



## Transport



Delivery distance of **401 km**



Flat-packed delivery

## Lifespan



Extra legal guarantee: **10 years**



Spare Parts available



Product **Repairable and Fully separable**

## Environmental quality and features

**34%** of recycled materials



Totally recyclable



None dangerous substance

## Certifications

